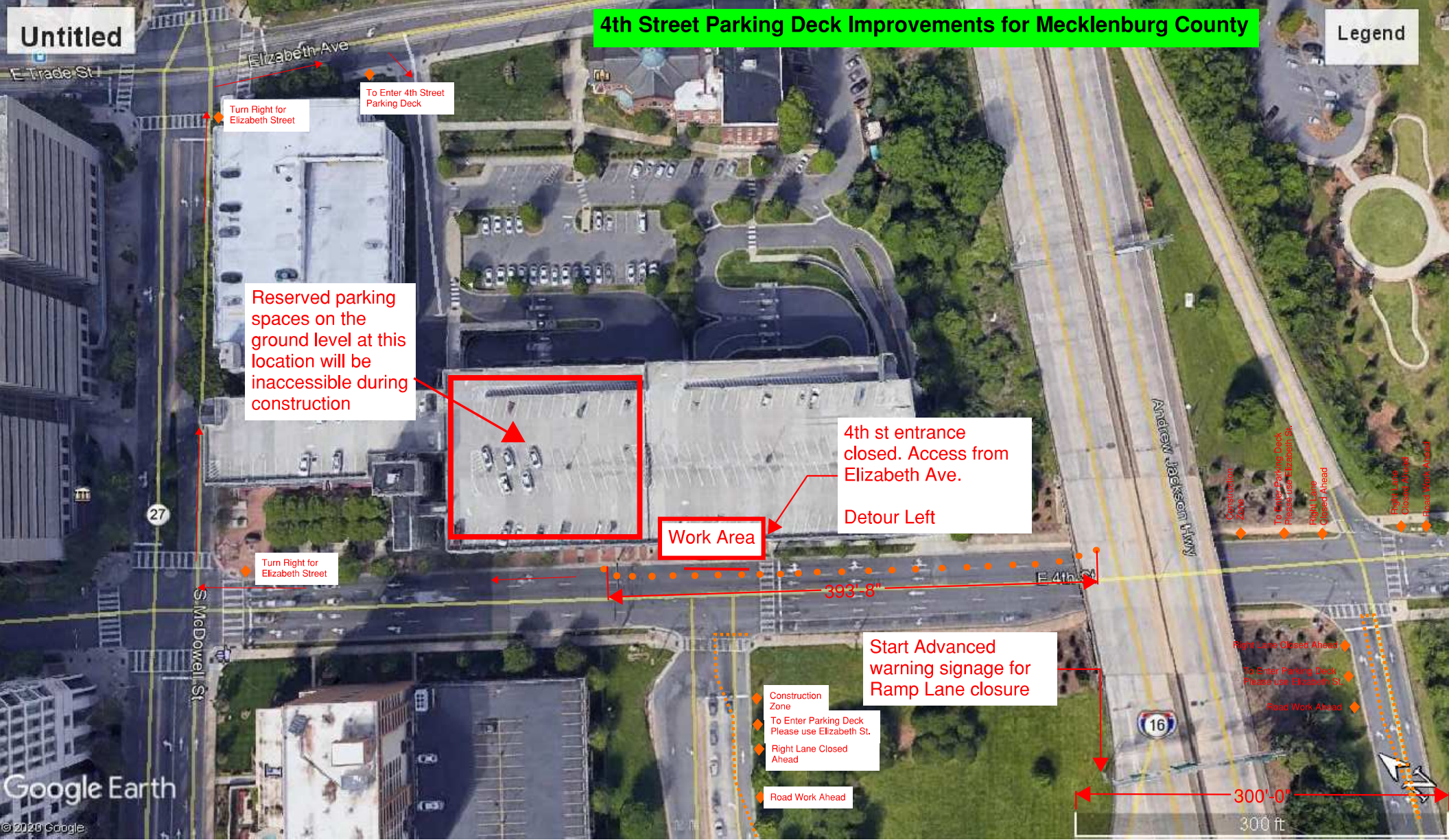


Untitled

4th Street Parking Deck Improvements for Mecklenburg County

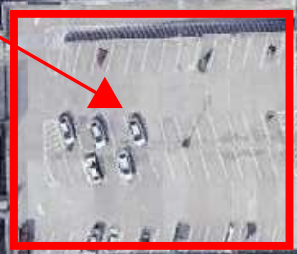
Legend



Turn Right for Elizabeth Street

To Enter 4th Street Parking Deck

Reserved parking spaces on the ground level at this location will be inaccessible during construction



Work Area

4th st entrance closed. Access from Elizabeth Ave.

Detour Left

Turn Right for Elizabeth Street

Start Advanced warning signage for Ramp Lane closure

Construction Zone

To Enter Parking Deck Please use Elizabeth St.

Right Lane Closed Ahead

Road Work Ahead

- Construction Zone
- To Enter Parking Deck Please use Elizabeth St.
- Right Lane Closed Ahead
- Road Work Ahead
- Right Lane Closed Ahead
- To Enter Parking Deck Please use Elizabeth St.
- Road Work Ahead

393'-8"

300'-0"
300 ft

Google Earth

© 2020 Google